

Innovative glare, privacy and heat protection with the sun protection systems for windows, curtain walls and patio roofs

heroyal sun protection systems



heroyal

Glare-free shading: heroal sun protection systems

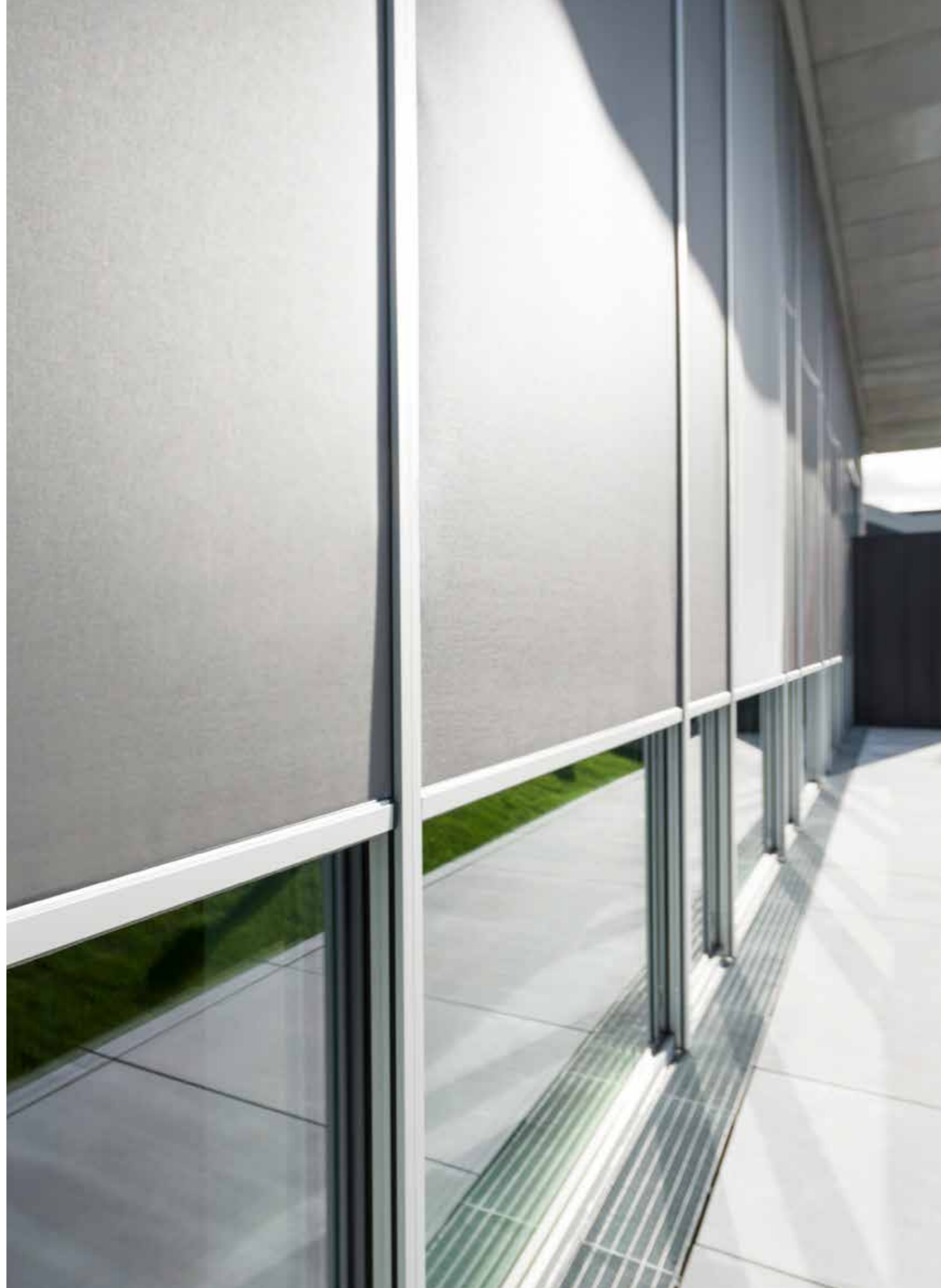
Premium materials, solutions that are technically coordinated down to the last detail and a wide range of designs are what distinguish the efficient heroal systems solutions. Innovative solutions for the building shell manufactured from aluminium and aluminium composites make heroal the reliable partner of choice for architects, planners, fabricators and builders.

Architects and planners value the huge variety of design options, while heroal specialist partners benefit from the economical and efficient heroal system solutions and builders are able to realise their specific preferences with a reliable system.

The exterior, textile heroal sun protection systems allow modern residential and commercial construction requirements for effective sun protection to be met in a wide variety of forms. The textile screens keep the room temperature pleasantly cool on hot days while still allowing in daylight and blend perfectly into the building shell.

The portfolio contains sun protection systems for window, door and curtain wall systems. What's more, heroal also offers solutions for use on outdoor roofs, clamp-on sun protection as well as a corner sun protection solution.

The aluminium system solutions with the highly weather-resistant heroal hwr powder coating available in countless colours and designs are available for maximum design freedom and perfect colour uniformity to the building shell. For the textiles, a standard range of over 250 fabrics that keep out up to 100% of the UV rays are available for selection.



Sun protection systems **Page 04**

heroal VS Z, heroal VS C, heroal VS

heroal VS Z solutions **Page 07**

heroal VS Z textile assembly,
heroal VS Z EM, heroal VS Z corner solution

Patio awning blind **Page 10**

heroal HS, heroal VS Z FME Contra GR 25

Curtain wall screening **Page 12**

heroal VS Z CS

Installation options **Page 14**

Components **Page 16**

System features **Page 20**

Textile/colour selection **Page 22**

heroal levels of prefabrication **Page 23**

heroal VS Z

Sun protection system with zip screen technology



heroal VS Z is an innovative zip screen system that is installed as external sun protection and is suitable even for very tall buildings. The curtain is guided in the aluminium guide rails by a zip attached to the fabric. With a view width of just 25 mm, the guide rail of the heroal VS Z is a pioneer on the market. A number of guide rails are available for selection, including versions with particularly narrow view widths that can be completely plastered in upon request. The high-quality textile selection of more than 250 textiles and colours is comprised of translucent and opaque fabrics, which reflect and absorb sunlight to reduce the solar radiation by up to 100%*. At the same time, the UV radiation is filtered by up to 100%*.

* Depending on the selected textile

Versions and design

- » compatible with the heroal window, sliding door, lifting-sliding door systems and the curtain wall system
- » integration in the intelligent building control system (Smart Building, Smart Home) via W-LAN or bus systems
- » obstacle detection can be installed, which stops the curtain if it encounters resistance
- » a wide range of installation options on the wall, window or curtain wall, as contra installation or under the lintel
- » wider curtain walls can easily be screened with connected systems or joined individual elements
- » combinations of connected elements with different element heights with a continuous box panel in door/window combination possible
- » certified ball impact resistance
- » high-quality colour design with heroal hwr powder coating, heroal SD surface designs and Les Couleurs® Le Corbusier for the aluminium components

System sizes and system features

- » max. element sizes: 6,000 mm wide, 5,000 mm high
- » max. area: 18 m² area (also possible with small 125 mm panel boxes)
- » heroal GR 37 guide rail can be fully plastered in
- » narrow heroal GR 25 guide rail with 25 mm view width for all installation types, except for contra installation
- » high weather resistance and low-maintenance
- » suitable for tall buildings
- » outstanding wind-resistance up to 145 km/h
- » electronic motor drive or manually via a handle
- » curtain can be controlled remotely, manually by a wall button or with an app
- » also available as solar-operated sun protection
- » available as systemware, textile assembly, prefabricated kit or finished element (heroal Ready VS Z)

heroal VS C

Sun protection system with stainless steel cable guide



The heroal VS C sun protection system comes with a slimline stainless steel cable guide, which makes this version ideal for windows and curtain walls with profiles with a narrow view width. The slender appearance of the entire system perfectly matches with the excellent heroal design language – the high-quality stainless steel cables impress with their minimalistic look. More than 250 different textiles in the standard portfolio provide maximum design freedom. The fabric selection can be used to provide either light-transmitting or opaque sun protection that reduces solar radiation by up to 98%.

* Depending on the selected textile

Versions and design

- » system compatible with the heroal window, sliding and lifting-sliding door systems
- » obstacle detection can be installed, which stops the curtain if it encounters resistance
- » integration in the intelligent building control system (Smart Building, Smart Home) via W-LAN or bus systems
- » versatile installation options on the wall/window or as contra installation
- » high-quality colour design with heroal hwr powder coating, heroal SD surface designs and Les Couleurs® Le Corbusier for the aluminium components

System sizes and system features

- » curtain guide on stainless steel cables
- » max. element sizes: 5,000 mm wide, 5,000 mm high, 15 m² area (also possible with the smallest 125 mm panel box)
- » extremely low-maintenance
- » curtain can be controlled remotely, manually by a wall button or with an app
- » also available as solar-operated sun protection
- » available as systemware, textile assembly or finished element (heroal Ready VS C)

heroal VS

Sun protection system with curtain guide via the end slat



Anyone looking for a basic version of the zip-guided heroal VS Z need look no further than the heroal VS sun protection system: one of the differences to the heroal VS Z zip screen system is the curtain guide exclusively via the end slat. This makes this sun protection system ideal for applications in which wind resistance does not play a significant role. More than 250 different textiles in the standard portfolio provide maximum design freedom. The fabric selection can be used to provide either light-transmitting or opaque sun protection that reduces solar radiation by up to 98%.

Versions and design

- » system compatible with the heroal window, sliding and lifting-sliding door systems
- » obstacle detection can be installed, which stops the curtain if it encounters resistance
- » integration in the intelligent building control system (Smart Building, Smart Home) via W-LAN or bus systems
- » versatile installation options on the wall or window or as contra installation
- » combinations of connected elements with different element heights with a continuous box panel in door/window combination possible
- » high-quality colour design with heroal hwr powder coating, heroal SD surface designs and Les Couleurs® Le Corbusier for the aluminium components

System sizes and system features

- » max. element sizes: 5,000 mm wide, 5,000 mm high
- » max. area: 15 m² (also possible with small 125 mm panel boxes)
- » extremely low-maintenance
- » electronic, motorised drive
- » curtain can be controlled remotely, manually by a wall button or with an app
- » also available as solar-operated sun protection
- » available as systemware, textile assembly or finished element (heroal Ready VS)

heroal VS Z textile assembly

Sun protection textile assembly for turnkey installation



The heroal VS Z textile assembly consists of a prefabricated textile from the current heroal collection, a cut-to-size textile roller shaft, an installed motor from the heroal range as selected by you and a pre-assembled end slat (type III) as well as all required accessories, such as roller caps and motor mounts. The heroal VS Z textile assembly can be installed in existing boxes or shafts, is delivered to the customer ready for installation and is ready for operation (plug and play). No interface with other trades is necessary. Special bearing brackets also allow the prefabricated system to be integrated into plastic surface-mounted boxes. The heroal VS Z textile assembly is available in a range of colours and textiles.

Versions and design

- » special bearing brackets also support the use of plastic top-mounted boxes
- » up to 250 different colours and textiles in different light transmittance grades from virtually transparent through to black-out (up to 100%)
- » high-quality colour design with heroal hwr powder coating, heroal SD surface designs and Les Couleurs® Le Corbusier for the aluminium components

System sizes and system features

- » max. element sizes: 6,000 mm wide, 5,000 mm high
- » max. area: 18 m² area
- » for heroal VS C and heroal VS: max. width 5,000 mm, max. height 3,000 mm and max. area 15 m²
- » system compatible with the heroal GR 37 guide rail
- » narrow heroal GR 25 guide rail with 25 mm view width for all installation types, except for contra installation
- » curtain can be controlled remotely, manually by a wall button or with an app
- » suitable for Somfy, Elero and Selve motors
- » optional crank-operated or battery-buffered drive solutions for the back-up escape route
- » also suitable for retrofitting
- » available as heroal VS Z, heroal VS C or heroal VS textile assembly

heroal VS Z EM

Sun protection system with zip screen technology and solar-powered drive



The heroal VS Z EM (Easy Mount) sun protection system is the clamp-on version of the heroal VS Z textile zip screen system. It can be installed without drilling and can be removed without a trace if needed. The integrated solar-powered drive makes the system ideal for retrofitting and it is also easy to use in heritage listed buildings, rental properties and existing properties. Various clamping support options enable the versatile use of the system in almost all common aluminium, plastic and wood window types.

With an integrated solar-powered drive, the heroal VS Z EM does not need a power supply. On days when the sun is not shining, the rechargeable battery can complete around 100 curtain movements. What's more, the motor can be charged by an integrated rechargeable battery through an additional interface. The heroal VS Z EM is controlled at the push of a button with remote control or a button on the wall.

Versions and design

- » system compatible with the heroal window systems
- » modern, cubic design with 90° panel box
- » 16 different stainless steel clamping supports for all common aluminium, plastic or wood window systems
- » high-quality colour design of the aluminium components with heroal hwr powder coating, heroal SD surface designs and Les Couleurs® Le Corbusier

System sizes and system features

- » max. element sizes: 2,000 mm wide, 2,200 mm high
- » max. area: 4.4 m² area
- » heroal FME front-mounted box system: size 85 mm
- » end slat type I
- » guide rail with 41 mm view width
- » high weather resistance and low-maintenance
- » wind-resistant up to 60 km/h (wind strength 7)
- » installation without holes with stainless steel clamping supports
- » operated by a solar-powered motor with rechargeable battery or a remote wall-mounted/hand-held transmitter
- » curtain control either wireless via remote control or using a wall button
- » available as systemware, textile assembly, prefabricated kit or finished element (heroal Ready VS Z EM)

heroal VS Z corner solution

Sun protection system with zip screen technology for all-glass corners



The innovative heroal VS Z corner solution consists of two textile screens with zip guide on the sides and a high-quality stainless steel cable guide in the corner area that ensure efficient sun protection, e.g. at all-glass corners. As the curtain is guided by separate end slats, which both only use a single stainless steel cable guide, the screens can be controlled independently of one another. Areas of up to 9 m² per textile screen can be covered, each with a maximum width of 3,000 mm and height of 3,000 mm. When the textile screen is not in use, it disappears in the heroal FME front-mounted box system (size 105 and 125 mm). The mitre connectors make it easy to join the boxes around corners. The fabric selection can be used to provide either light transmitting or opaque sun protection that reduces solar radiation by up to 98%*.

Versions and design

- » system compatible with the heroal sliding and lifting-sliding door systems
- » integration of insect screen doors and stenter frames using spacing profiles and matching decorative caps possible
- » obstacle detection can be installed, which stops the curtain if it encounters resistance
- » integration in the intelligent building control system (Smart Building, Smart Home) via W-LAN or bus systems
- » attachment of the tension cable either on the floor or on the curtain wall with a 90° steel bracket and aluminium cover
- » flexible installation options on the wall or window
- » high-quality colour design with heroal hwr powder coating, heroal SD surface designs and Les Couleurs® Le Corbusier for the aluminium components

System sizes and system features

- » max. element sizes: 3,000 mm wide, 3,000 mm high
- » max. area: 9 m² area per textile screen (also possible with small 125 mm panel boxes)
- » heroal FME front-mounted box system: size 105 and 125 mm, demountable from below
- » cubic box design: 90°
- » heroal GR 25 guide rail with an extremely narrow view of just 25 mm on the longitudinal sides
- » high weather resistance and low-maintenance
- » wind-resistant up to 37 km/h
- » electronic, motorised drive
- » available as systemware



Video
Highlights

heroal VS Z FME Contra GR 25

Vertical blind for patio roofs



The zip-guided heroal VS Z FME Contra GR 25 sun protection system can be fully integrated into the heroal OR or heroal CR patio roof systems as a vertical blind. It provides protection when the sun is low in the sky, protects against wind and weather as well as cool breezes on spring and autumn evenings. The heroal VS Z FME Contra GR 25 sun protection system provides outstanding weather protection thanks to the high wind load resistance. The vertical blind is installed in a flush-mounted panel box for a harmonious design. The heroal GR 25 guide rail disappears inconspicuously in the column of the patio roof system. Maximum spans of 6,000 mm wide and 3,000 mm high are possible without a centre column.

Versions and design

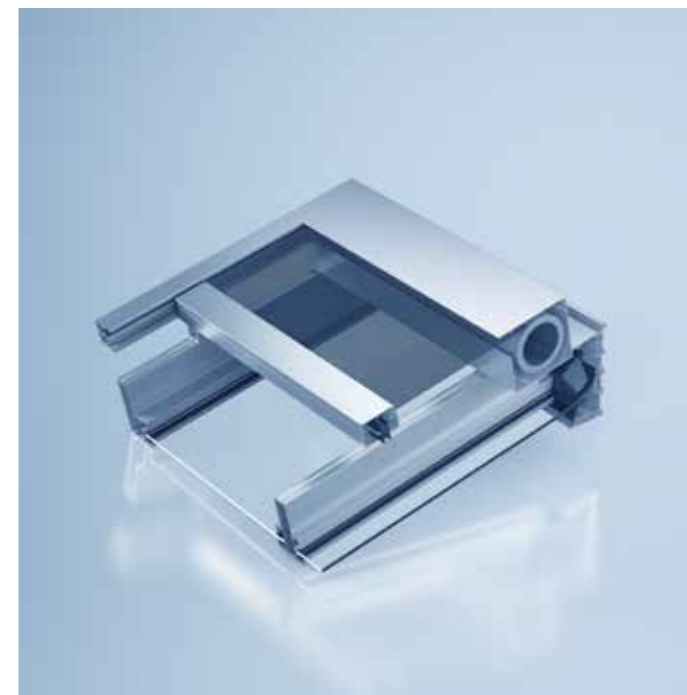
- » system compatible with the heroal OR and heroal CR patio roof systems – can also be retrofitted
- » guide rails recessed in the column
- » obstacle detection can be installed, which stops the curtain if it encounters resistance
- » integration in the intelligent building control system (Smart Building, Smart Home) via W-LAN or bus systems
- » wide range of colours, coordinated to heroal HS
- » high-quality colour design with heroal hwr powder coating, heroal SD surface designs and Les Couleurs® Le Corbusier for the aluminium components

System sizes and system features

- » max. element sizes: 6,000 mm wide, 3,000 mm high
- » max. 18 m² area
- » optimum box size: 125 mm
- » cubic box design: 90°
- » wind-resistant up to 38 km/h (depending on the place of installation and element size)
- » max. span without centre column of up to 6 m
- » electronic, motorised drive
- » curtain can be controlled remotely, manually by a wall button or with an app
- » available as systemware, textile assembly or prefabricated kit (heroal VS Z FME Contra GR 25)

heroal HS

Horizontal blind for patio roofs and conservatories



As a horizontal blind for onglaze applications, heroal HS can be perfectly combined with the heroal OR outdoor roof system or the heroal C 50 WG conservatory system. The textile sun protection system provides effective protection against strong solar radiation. The minimal space required enables the subtle integration of the sun protection for every type of application. For maximum textile tension, in addition to the zip guide, heroal HS is stretched by a tensioning system to provide shade for a maximum width of 5 m.

Versions and design

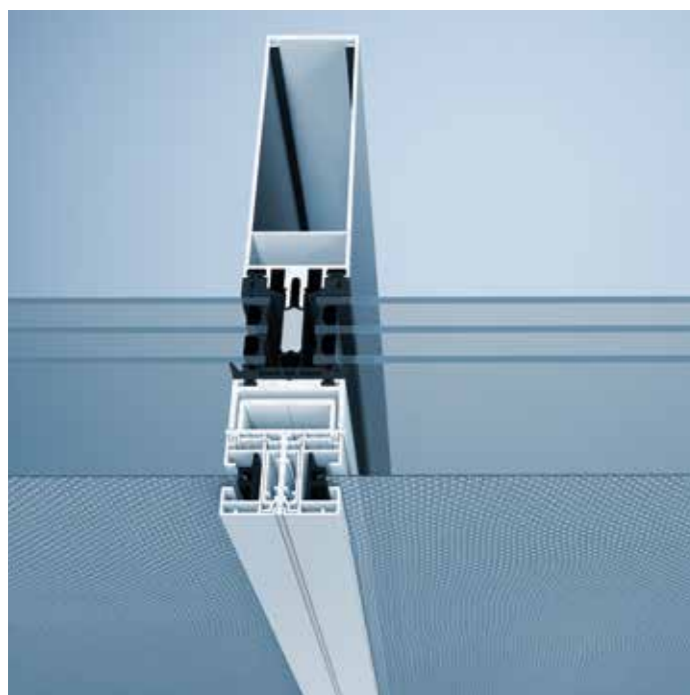
- » system compatible with the heroal OR outdoor roof system and the heroal C 50 WG conservatory system – can also be integrated retrospectively
- » installation in third-party systems is also possible
- » concealed attachment
- » integration in the intelligent building control system (Smart Building, Smart Home) via W-LAN or bus systems
- » use of exceptionally colourfast acrylic textiles as well as Soltis 92 textiles
- » modern styling thanks to the cubic construction
- » for wider patio roofs, horizontal blinds can be joined together as required
- » high-quality colour design with heroal hwr powder coating, heroal SD surface designs and Les Couleurs® Le Corbusier for the aluminium components

System sizes and system features

- » max. element sizes: 5,000 mm wide, 5,300 mm high
- » max. area: 21 m² area
- » optimum box size: 165 mm
- » cubic box design: 90°
- » guide rail view: 55 mm
- » roof pitch: 0-45°
- » electronic, motorised drive
- » curtain can be controlled remotely, manually by a wall button or with an app
- » available as systemware and finished element (heroal Ready HS)

heroal VS Z CS

Semi-integrated curtain wall sun protection system



To seamlessly integrate the heroal VS Z sun protection system into transom-mullion curtain walls such as heroal C 50, heroal developed heroal VS Z CS semi-integrated (curtain wall screen) with the heroal GR 25 guide rail. The system can be installed on conventional transom-mullion systems with a view width of at least 50 mm as a classic front-mounted installation using standard sun protection bolts. The heroal VS Z CS semi-integrated uses an integration profile as the mounting base, which can already be fabricated with the curtain wall transoms in the workshop – this saves time on the construction site. The installation close to the curtain wall makes heroal VS Z CS semi-integrated wind-resistant up to 145 km/h.

Versions and design

- » system compatible with the heroal C 50 curtain wall system and transom-mullion curtain walls of other manufacturers
- » integration in the intelligent building control system (Smart Building, Smart Home) via W-LAN or bus systems
- » obstacle detection can be installed, which stops the curtain if it encounters resistance
- » certified ball impact resistance
- » high-quality colour design with heroal hwr powder coating, heroal SD surface designs and Les Couleurs® Le Corbusier for the aluminium components

System sizes and system features

- » max. element sizes: 3,000 mm wide, 4,000 mm high
- » max. area: 12 m² area (also possible with small 85 mm panel boxes)
- » slender heroal GR 25 guide rail with 25 mm view width for front-mounted installation
- » high weather resistance and low-maintenance
- » suitable for tall buildings
- » outstanding wind-resistance up to 145 km/h
- » electronic, motorised drive
- » curtain can be controlled remotely, manually by a wall button or with an app
- » available as systemware, textile assembly or finished element (heroal Ready VS Z)



Video Highlights

heroal VS Z CS

Front-mounted curtain wall sun protection system



To integrate the heroal VS Z sun protection system surface-mounted into transom-mullion curtain walls such as heroal C 50, heroal developed heroal VS Z CS front-mounted (curtain wall screen) with the heroal GR 37 guide rail. The system can be installed on conventional transom-mullion systems with a view width of at least 50 mm as a classic front-mounted installation using standard sun protection bolts. Crossbars in different lengths are used as the mounting base for heroal VS Z CS front-mounted. The individual distance to the curtain wall also allows the system to be installed in front of fall protection safeguards for example.

Versions and design

- » system compatible with the heroal C 50 curtain wall system and transom-mullion curtain walls of other manufacturers
- » integration in the intelligent building control system (Smart Building, Smart Home) via W-LAN or bus systems
- » obstacle detection can be installed, which stops the curtain if it encounters resistance
- » wider curtain walls can easily be screened with connected systems or joined individual elements
- » combinations of connected elements with different element heights with a continuous box panel in door/window combination possible
- » certified ball impact resistance
- » high-quality colour design with heroal hwr powder coating, heroal SD surface designs and Les Couleurs® Le Corbusier for the aluminium components

System sizes and system features

- » max. element sizes: 3,500 mm wide, 5,000 mm high
- » max. area: 15 m² area (also possible with small 125 mm panel boxes)
- » heroal GR 37 guide rail with 37 mm view width
- » high weather resistance and low-maintenance
- » wind-resistant up to 38 km/h
- » curtain can be controlled remotely, manually by a wall button or with an app
- » available as systemware, textile assembly or finished element (heroal Ready VS Z)

Installation options

Easy installation for every situation

heroal sun protection systems set themselves apart with their easy application and versatile installation options. They can be installed on the wall or window, in the reveal or lintel or surface-mounted on the curtain wall. When installed in the reveal, the panel box faces inwards due to the contra installation. Maintenance and repairs are easy to perform when required thanks to the simple system design. A dismantling ring and an optimised roller capsule facilitate the dismantling of the textile.

Installation with crossbars is also possible in order to vary the distances to the window or the structure. The small winding diameter of the textile means that it can easily be installed in small panel boxes. The high-quality colour design for the aluminium components with the heroal hwr powder coating, heroal SD surface designs and Les Couleurs® Le Corbusier colours is available for all versions.



Installation on the wall and in the window

Surface-mounted installation

- » installation on the wall or window
- » heroal GR 25 guide rails with a 25 mm view width or heroal GR 37 with a 37 mm view width
- » option of distancing with doubled guide rails or crossbars for a greater distance to the structure
- » no visible screw connection due to clip-on cover strip
- » demountable from the front



Installation in the reveal

Contra installation

- » for deep reveals
- » heroal GR 37 guide rail with 37 mm view width
- » for greater distance to the window or obstacles on the windowsill
- » no visible screw connection due to clip-on cover strip
- » full-surface view of the panel boxes thanks to the use of panels without an additional groove for the ceiling and wall bracket



Installation in the lintel

Flush-mounted installation (in the lintel)

- » installation on the wall, window or in the recess
- » concealed installation plastered in to the lintel
- » heroal GR 37 guide rail with 37 mm view width
- » plaster angle on the box to accommodate the customer's plaster rail
- » virtually invisible when the curtain is raised



installation on the curtain wall

On the curtain wall

- » suitable for heroal C 50 transom-mullion curtain wall system and curtain walls of other manufacturers
- » integrated installation with integration profile and sun protection bolts for glazing (heroal VS Z CS semi-integrated)
- » identical installation to the front-mounted installation
- » can also be installed with crossbars for a greater distance to the glazing (heroal VS Z CS front-mounted)

Installation of the heroal VS Z EM

Easy clamp-on installation for almost every window



Installation in the window

The clamp-on heroal VS Z EM sun protection is installed in the window frame from inside the building in just a few simple steps without the use of any special tools either by a specialist or by the end users themselves. For installation, two clamping supports and the installation loops are first attached. After configuring the tube motor, the heroal VS Z EM is raised using the installation loops and inserted in the window frame. Installation takes place from inside the building, so no scaffold or crane is required, even at higher floor levels. While the clamp-on sun protection is held in position on the installation loops, the two clamping supports are mounted on the lower window frame and two additional clamping supports are inserted and attached with a TX 25 ball-point hex key. The number and position of the clamping supports depends on the size of the element. Once the firm fit and flawless function of the sun protection system has been checked, the installation loops can be removed. As no structural changes are required, no landlord or owner approval is needed to install the clamp-on sun protection.

Panel box systems

Panel boxes for every design

heroal offers two different types of panel boxes for the sun protection systems. The heroal FME (front-mounted extruded) panel box system is an extruded front-mounted box that is positioned on the masonry or in the reveal. The front-mounted box system is available in different box designs with 20°, 45° and 90° chamfer as well as a half-round variant. The extruded heroal FMB (flush-mounted box) panel box system is a flush-mounted box. It is installed directly in the lintel making it invisible.

Different plaster-base profiles are available for selection for different applications.

System features

- » extremely solid box end system comprised of a steel motor mount and aluminium decorative cap for all box designs and sizes
- » simplified processing of the profiles thanks to the integrated screw channels enable greater widths and additional stability in the panel box
- » the panel box system demountable from below contains a roller capsule with offset locking catch
- » high-quality colour design for the aluminium components with heroal hwr powder coating, heroal SD surface designs and Les Couleurs® Le Corbusier



heroal FME 20° front-mounted box



heroal FME 45° front-mounted box



heroal FME HC N front-mounted box



heroal FME 90° front-mounted box



heroal FMB 90° flush-mounted box

Guide rails

Guide rails tailor-made for every installation situation

heroal offers a wide range of guide rails for the sun protection systems that can be used to create perfect solutions for every installation situation. The exceptionally robust extruded rails made from high-quality aluminium are fitted with plastic inserts and keep the textile stable as well as ensuring quiet operation. The guide rails for the heroal VS Z are available as a double guide in view widths of 25 mm, 37.5 mm and 60 mm, where the narrow 25 mm view widths create a harmonious design in combination

with the heroal C 50 curtain wall system. For easy installation of the heroal VS Z OR vertical blind for patio roofs, the guide rails can be detached from the motor mount and the roller capsule mount.

System features

- » narrow heroal GR 25 guide rail with 25 mm view width for all installation types, except for contra installation
- » heroal GR 37 FMB type II with interior cover cap structure enabling it to be completely plastered in
- » heroal GR 37 2-piece for concealed screw connection for all types of installation, incl. contra installation
- » double guide rail, 60 mm wide for heroal GR 37
- » easy to clip open the 2-piece guide rail on the wall installation profile
- » Double profiles available for all guide rails
- » high-quality colour design for the aluminium components with heroal hwr powder coating, heroal SD surface designs and Les Couleurs® Le Corbusier



heroal GR 25 guide rail



heroal GR 37 FMB type II guide rail



heroal GR 31 guide rail in box depth



heroal GR 37 2-piece guide rail



heroal GR 37 contra installation guide rail

End slats

End slats for ideal textile tension

heroal offers three different end slats for the sun protection systems. The extruded aluminium end slats with different geometries ensure that the textile is under continuous tension. Depending on the height and width of the element, end slat type I, type II or type III can be selected to achieve an optimum textile tension.

End slat type III is ideal for extremely narrow and wide elements as it ensures even better textile tension and less wrinkling with the use of one or two weights as well as a rectangular hollow section. End slats type II and III also have the same view heights, making combined installation possible.



End slat type I



End slat type II



End slat type III

Panel boxes, guide rail and end slats

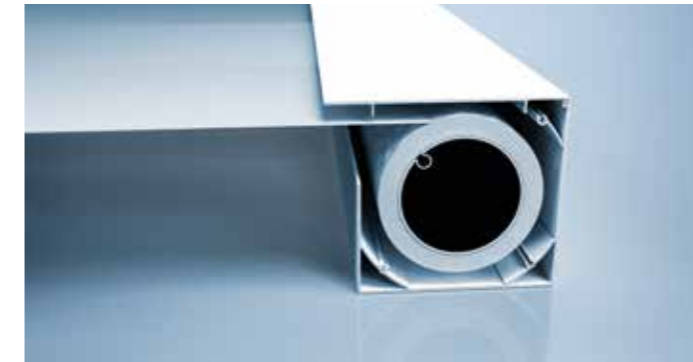
For heroal HS horizontal blinds

The heroal HS horizontal blind is delivered as a prefabricated kit (heroal Ready), which can be directly installed and retrofitted as necessary. The pretension and belt slot are already pre-installed in the as-delivered condition for rapid initial operation. The zip-guided tensioning system together with the end slat ensures an optimum textile tension.

The panel box of the heroal HS horizontal blind protects the textile from the weather when retracted.

The extruded guide rails hold the belt and are attached to the roof construction with crossbars. A well-designed guide rail and crossbar concept allows several systems to be installed next to each other: for wide patio roofs, the individual systems are attached to a rafter with a centre crossbar, which allows any number to be joined as required. The slotted holes in the mounting bracket make it easy to create expansion joints to absorb the linear expansion. A special universal crossbar also allows the heroal HS to be installed on outdoor roofs made by other manufacturers.

The 2-piece, extruded aluminium end slat ensures a consistent stressing of the textile and provides easy access to the tensioning system. Depending on the width of the element, end slat type I or type II can be selected to achieve an optimum textile tension.



heroal HS 2-piece panel box



heroal HS 1-piece guide rail



heroal HS end slat

System features

- » cubic 90° box design
- » panel box with small dimensions of 192 x 162 mm for mounting the textile roller shaft
- » guide rail view: 55 mm
- » end slat: type II
- » easy access to the tensioning system thanks to the two-piece end slat
- » fast initial operation, as the pretension and belt slot are already pre-installed in the as-delivered condition
- » high-quality colour design with heroal hwr powder coating, heroal SD surface designs and Les Couleurs® Le Corbusier for the aluminium components

System sizes and system features

Description	heroal VS Z	heroal VS C	heroal VS	heroal VS Z textile unit	heroal VS Z EM
Box system	FME, FMB	FME	FME	-	FME
Box shapes	20°, 45°, 90°, HC N	20°, 45°, 90°, HC N	20°, 45°, 90°, HC N	-	90°
Box sizes [mm]	85, 95, 105, 125	85, 95, 105, 125	85, 95, 105, 125	-	85
Max. element width [mm]	6,000	5,000	5,000	6,000	2,000
Max. element height [mm]	5,000	5,000	5,000	5,000	2,200
Max. area [m²]	18	15	15	18	4.40
Guide rails	heroal GR 25, heroal GR 31, heroal GR 37	-	heroal GR 30	-	heroal GR 41/48
End slats	Type I, II, III	Type II	Type II	Type I, II, III	Type I

Wind-resistant [km/h]	up to 145	up to 30	up to 30	up to 145	up to 65
hailstorm class	6	6	6	6	6
Certified ball impact resistance	•	-	-	•	-
Obstacle detection	•	•	•	•	-
Curtain control	Button, remote, crank	Button, remote, crank	Button, remote, crank	Button, remote, crank	Button, remote
Power unit	Motor, handle, solar motor ¹	Motor, solar motor ¹	Motor, handle, solar motor ¹	Motor, handle, solar motor ¹	Solar motor ¹
Smart Building/Smart Home	Remote-control motor	Remote-control motor	Remote-control motor	Remote-control motor	-
Installation options	on wall/window, contra, lintel	on wall/window	on wall/window, contra	on wall/window, contra, lintel	clamped into window frame
Also as heroal Ready finished element	•	•	•	•	•
heroal C 50 curtain wall system	•	-	-	•	-
heroal OR outdoor roof system	•	-	-	•	-
heroal CR outdoor roof system	•	•	•	•	-
heroal C 50 WG conservatory system	•	•	•	•	-
heroal W 72/W 77 window system	•	•	•	•	•
heroal hwr powder coating	•	•	•	•	•
Eloxal coating	•	•	•	•	•
heroal SD	•	•	•	•	•
Les Couleurs® Le Corbusier	•	•	•	•	•

Textiles and colours	More than 250	Up to 250	Up to 250	More than 250	More than 250
Opening factor [%]	0/1/3/3.5/4/5/8/10/14	0/1/3/3.5/4/5/8/10/14	0/1/3/3.5/4/5/8/10/14	0/1/3/3.5/4/5/8/10/14	0/1/3/3.5/4/5/8/10/14
Reduction up to [%] ¹¹	Solar radiation	100	75	75	100
	UV radiation	100	98	98	100

Description	heroal VS Z Corner solution	heroal VS Z FME Contra GR 25 für Terrassenmarkisen	heroal HS	heroal VS Z CS semi-integrated	heroal VS Z CS front-mounted
Box system	FME	FME	FME	FME	FME
Box shapes	90°	90°	90°	20°, 45°, 90°, HC N	20°, 45°, 90°, HC N
Box sizes [mm]	105, 125	125	165	85, 95, 105, 125	85, 95, 105, 125
Max. element width [mm]	3,000	6,000	5,000	3,000	3,500
Max. element height [mm]	3,000	3,000	5,300	4,000	5,000
Max. area [m²]	9	18	21	12	15
Guide rails	heroal GR 25	heroal GR 25	heroal HS	heroal GR 25	heroal GR 37
End slats	Type III	Type III	HS type II	Type I, II, III	Type I, II, III

Wind-resistant [km/h]	up to 37	up to 37	up to 50	up to 145	up to 38
hailstorm class	6	6	6	6	6
Certified ball impact resistance	-	-	-	•	•
Obstacle detection	•	•	•	•	•
Curtain control	Button, remote	Button, remote	Button, remote	Button, remote	Button, remote
Power unit	Motor	Motor	Motor	Motor, solar motor	Motor, solar motor
Smart Home	Remote-control motor	Remote-control motor	Remote-control motor	Remote-control motor	Remote-control motor
Installation	Wall, window	Contra on the eave	On outdoor roof/conservatory	Curtain wall integration	Transom-mullion curtain wall
Also as heroal Ready finished element	-	•	•	•	•
heroal C 50 curtain wall system	•	-	-	•	•
heroal OR outdoor roof system	-	•	•	-	-
heroal CR outdoor roof system	-	•	•	-	-
heroal C 50 WG conservatory system	•	-	•	•	•
heroal W 72/W 77 window system	•	•	-	-	•
heroal hwr powder coating	•	•	•	•	•
Eloxal coating	•	•	-	•	•
heroal SD	•	•	•	•	•
Les Couleurs® Le Corbusier	•	•	•	•	•

Textiles and colours	More than 250	More than 250	Up to 50	More than 250	up to 250
Opening factor [%]	0/1/3/3.5/4/5/8/10/14	0/1/3/3.5/4/5/8/10/14	0 / 4	0/1/3/3.5/4/5/8/10/14	0/1/3/3.5/4/5/8/10/14
Reduction up to [%] ¹¹	Solar radiation	100	75	100	98
	UV radiation	100	98	100	98

Textile and colour selection

Maximum design freedom

For a pleasant room climate and different needs and requirements, heroal offers a high-quality and diverse selection of textiles: over 250 fabrics are available for selection, with varying colours and light transmittance – from semi-transparent to opaque.

The **“Sergé & Satiné”** fabric consists of woven and coated glass fibres. The fibreglass core and the PVC coating make the textiles exceptionally smooth, creating a pleasant atmosphere and ensuring a clear view outside.

The **“Soltis”** fabric for exceptional shape retention. The textile is pulled in both directions under high tension and fixed in place with liquid PVC. The high textile tension makes the fabric ideal for shading large areas and for complete room darkening.

The **“Flexilight 6002 Opaque”** fabric is highly resistant to UV rays and boasts a dirt-repellent texture. This guarantees an attractive look even after many years of use. The PVC fabric is phthalate-free, very easy to process and extremely flexible.

The **“Elements”** fabric is woven from spun-dyed acrylic fibres and provides optimised performance features in terms of colour stability, resistance level and sun protection. The exclusive “Cleanguard” coating makes these textiles exceptionally water- and dirt-repellent.

The **“Sergé BO Lunar and Solar”** blackout fabrics have a darkening effect. Both also repel humidity thanks to a full-surface PVC foil. The BO Lunar textiles provide complete darkness while the BO Solar textiles have a translucence with an opening factor of 3%. heroal IS insect screen system fabrics can also be used. In addition, a PVC viewing window can be integrated on request (**Crystal**). For a completely individual design, customised printing is also available (on request).

All shades in the RAL colour range, the natural shades of the Les Couleurs® Le Corbusier and heroal SD surface designs with wood, concrete or rust looks are available for the aluminium components of the textile screens.

Trend textiles

For the sun protection systems heroal offers 15 selected trend textiles with short delivery times:



You can view the full selection of textiles in textile fans. The textile colours shown here may differ from the originals for printing reasons.

Overview of heroal levels of prefabrication

Maximum flexibility thanks to a choice of different stages of assembly

In order to organise manufacturing processes efficiently and to be able to respond flexibly to external factors, heroal partners always have the choice of different assembly stages for heroal sun protection systems. In the case of heroal system items, all steps in the manufacturing process are carried out exclusively by the heroal partner. heroal kits contain components that have

already been cut to size and machined and, by request, the entire textile assembly. heroal Ready finished elements have the highest degree of prefabrication. Here, the elements are delivered fully prefabricated and ready for installation by the heroal partner.



heroal system items

1



heroal Ready

3



2

heroal kit



heroal VS Z kit without textile assembly



heroal VS Z kit with textile assembly

heroal



simply better *spaces for life*

As a manufacturer of aluminium system solutions for roller shutters, sun protection, roller doors, windows, doors, sliding doors, curtain walls and patio roofs, heroal is an international market leader, supporting high-quality residential and commercial construction projects worldwide. heroal products are developed and manufactured in Germany and set themselves apart with their premium quality and exceptional performance features. As a result, the innovative system solutions contribute to greater sustainability, security, comfort and architectural freedom for both current and future building projects and impress with simple and efficient planning and fabrication by heroal specialist partners.

Roller shutters | Sun protection | Roller doors | Windows | Doors | Sliding doors |
Curtain walls | Patio roofs

heroal – Johann Henkenjohann GmbH & Co. KG

Österwieher Str. 80 | 33415 Verl (Germany) | Tel. +49 5246 507-0 | Fax +49 5246 507-222 | www.heroal.com

Article no. 87038 30 04 | 05.2024